
WHATS NEW!

PlanScan & PlanCAD Version 5.8

What's New in Planmeca FIT Version 5.8

Additional Assistance

Go to <http://planmecadigitalacademyus.com/> for videos and downloadable documentation. Planmeca Digital Academy offers online courses and information on hands-on courses.

If you have questions, please contact Customer Support at:

Toll Free	800.537.6070
E-mail	customersupport@e4d.com
Fax	972-479-1106
Hours of Operation	7 am - 6 pm CT (Monday - Friday)
Product Website	www.planmecausa.com
Mailing Address	D4D Technologies LLC dba E4D Technologies 650 International Pkwy Richardson, TX 75081



<http://planmecadigitalacademyus.com/>

Setup Screen

CHANGES

1. Full Arch
2. New materials
3. Translucency

Full Arch

For diagnostic cases, orthodontic aligners, or when sending a large restorative case (without drawing margins) to a laboratory, select Full Arch as the restoration type.

When this option is selected, the rest of the Setup Screen is not available.

Click the Scan screen to proceed. See [Scanning section](#) for more information.



New Materials

New materials are available from our Material Manufacturers.

Block Recommendation Chart

PLANMECA

Manufacturer Indications for Materials

Material	Mfr	Anterior Full Crown	Posterior Full Crown	Veneer	Inlay/Onlay	Implant Restoration	Bridge
Lava Ultimate	3M			✓	✓		
Cerasmart	GC	✓	✓	✓	✓	✓	
IPS e.max	Ivoclar	✓	✓	✓	✓	✓	Anterior Only
IPS Empress	Ivoclar	✓	✓	✓	✓		
TelioCAD	Ivoclar	← Provisional Only →					
VITA Enamic	Vita	✓	✓	✓	✓	✓	
VITABLOCS Mark II	Vita				✓		
VITA Suprinity*	Vita	✓	✓	✓	✓	✓	
VITABLOCS Trilux Forte	Vita	✓		✓			
Zirlux FC2	Zahn	✓	✓			✓	✓
Burn Out Block (BOB)	E4D	← For cast or pressed only →					

✓ Indicated * not sold in the USA

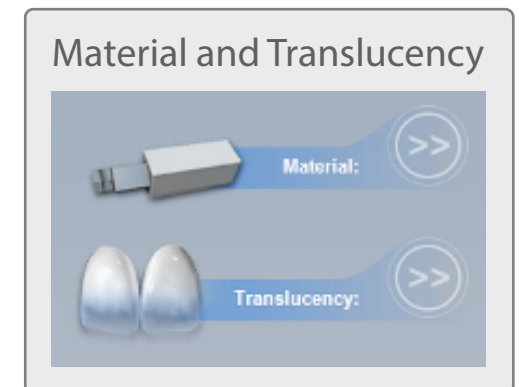
Recommendations from manufacturer websites: 3mespe.com, gcamerica.com, ivoclarvivadent.com, vita-zahnfabrik.com, and zirlux.com.

©2016 Planmecca All rights reserved EDU1119.H

Translucency

The material translucency is now a separate selection.

Not applicable appears if the chosen material does not have translucency options.



Scanning

CHANGES

1. Upper and Lower Scan Options
2. Model Alignment
3. Full Arch

Upper and Lower Scan Options

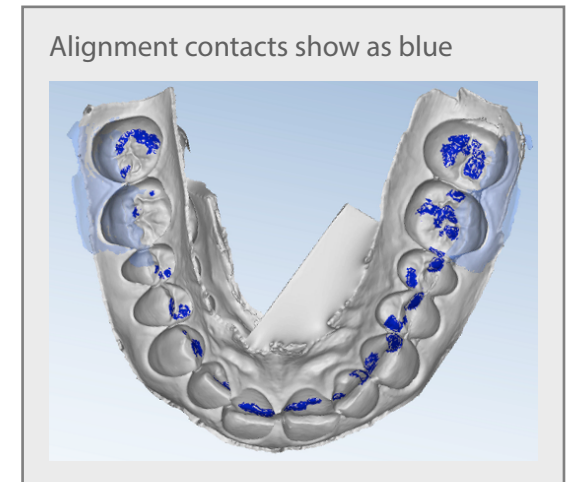
Instead of Prep and Opposing on the Scan screen, the options are Upper and Lower.

For full arch scans:

- Start on the occlusal for both scans. See Full Arch technique for more information.
- Ensure there is enough buccal gingival data to aid in alignment

Model Alignment

- Full Arch mode requires manual alignment.
- Manual alignment now shows the upper model at the top, even if it is not the prep model.
- The central point of the model rotation is now in the center of the model instead of at the point where you have clicked.
- When the models are aligned, you can rotate to view the amount of contact from above, shown in blue.



Full Arch Scanning

Initial scanning position

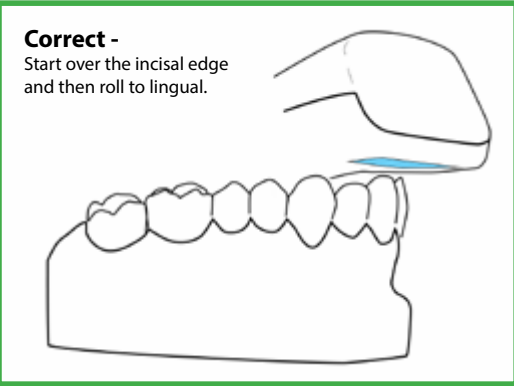
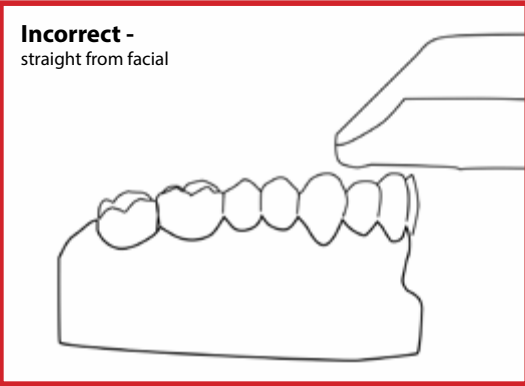
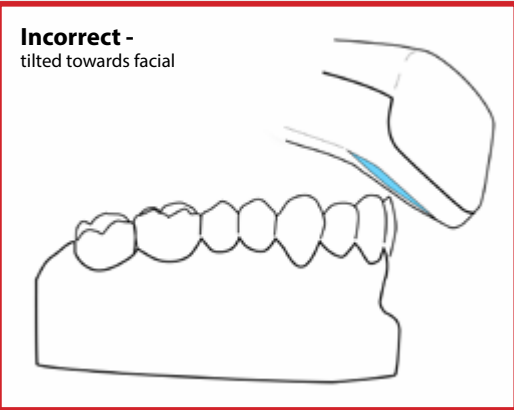
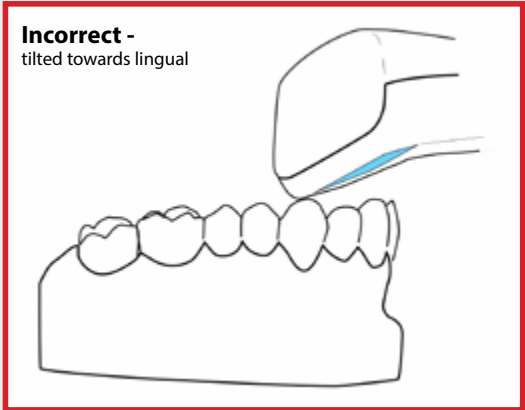
For full arch scans, go straight to the Scan tab. No setup needed.

Begin with the scanner pointing towards the midline. Initial scan should be straight over the incisal. See correct and incorrect examples.

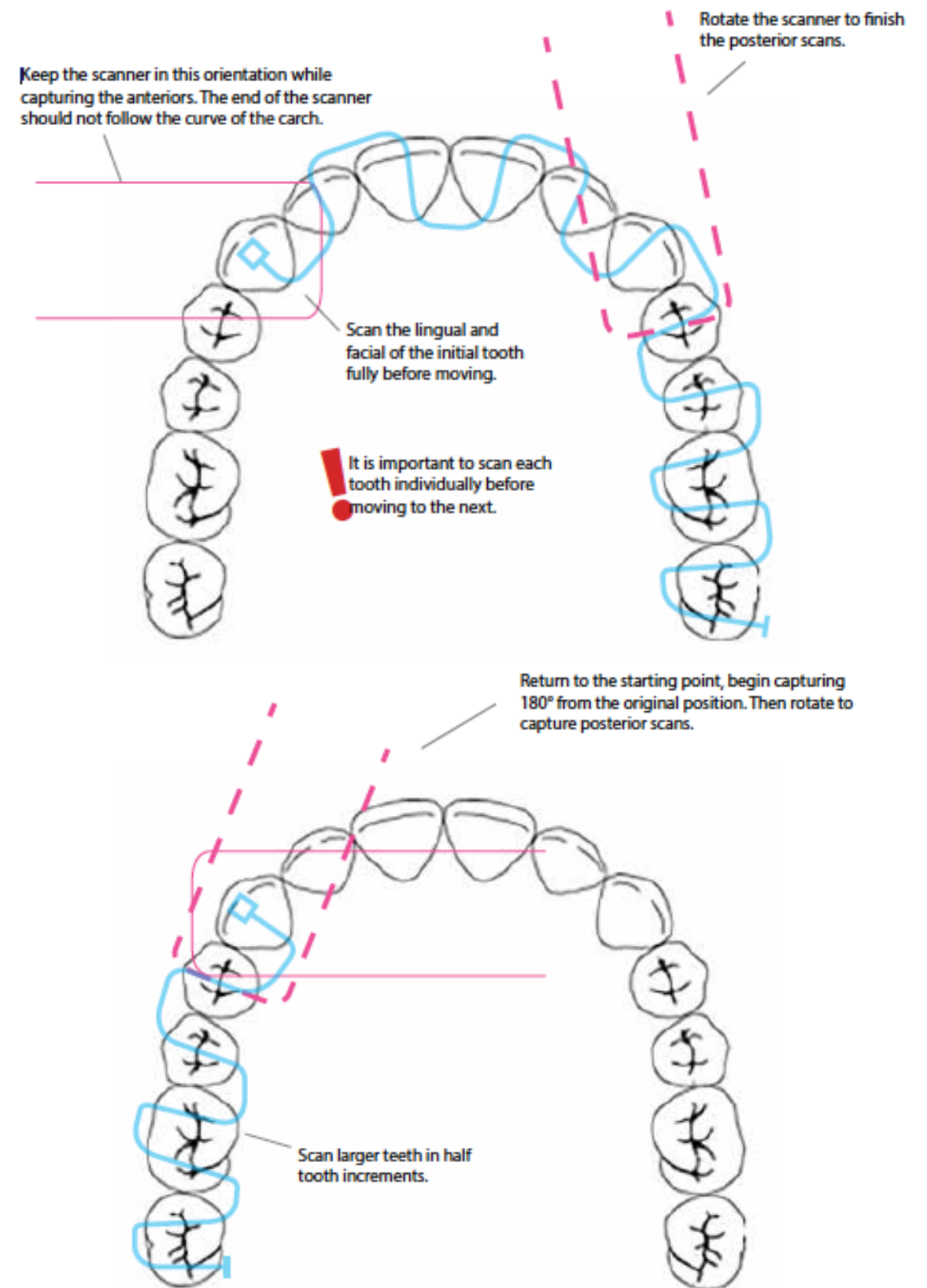
See scan pattern on other side for more detail.

Retraction devices are highly recommended to eliminate interference of soft tissue.

Scanner Position Examples

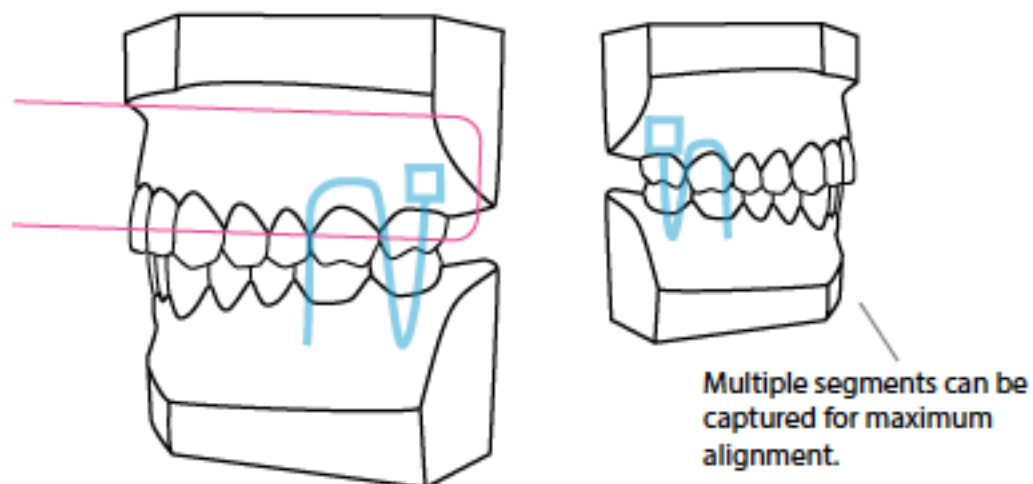
<p>Correct - Start over the incisal edge and then roll to lingual.</p> 	<p>Incorrect - straight from facial</p> 
<p>Incorrect - tilted towards facial</p> 	<p>Incorrect - tilted towards lingual</p> 

Scanner Upper and Lower Arches



Scan the Full Arch Buccal Bite

Start the buccal segment scan over the gingival tissue of the maxillary arch. Remain still until capture begins. In some cases reduce the Field of View to small.



Scan both posterior sides to increase alignment accuracy. **Start on upper for both sides.** Scan 4-6 teeth total on each side, ideally just the molars.

MOVIE 1 Scan both posterior sides for increased alignment accuracy on full arch cases.



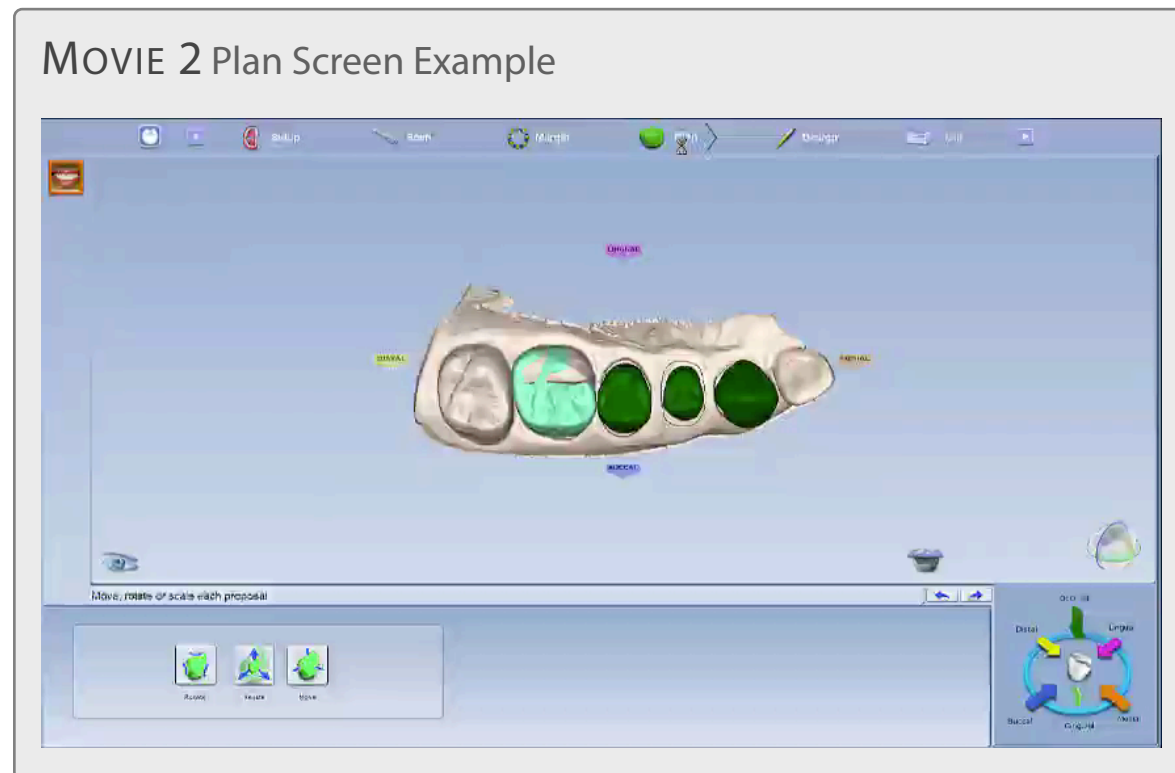
Notes about full arch scanning:

- Capture the full arch before filling in any missing data.
- It is recommended to use an intraoral retraction device while scanning.
- Watch the demo videos for specifics on technique.
- Failure to capture using this method may result in loss of accuracy.
- Scanning speed is slower on full arch scanning to aid in accuracy.
- Manual alignment is required.

Plan Screen

The all new Plan Screen is used to size and position the proposal to aid autogenesis. This is an optional step that is commonly used when adjacent teeth are prepped or missing.

Preview library teeth display on the model. The light green tooth is the active selection.



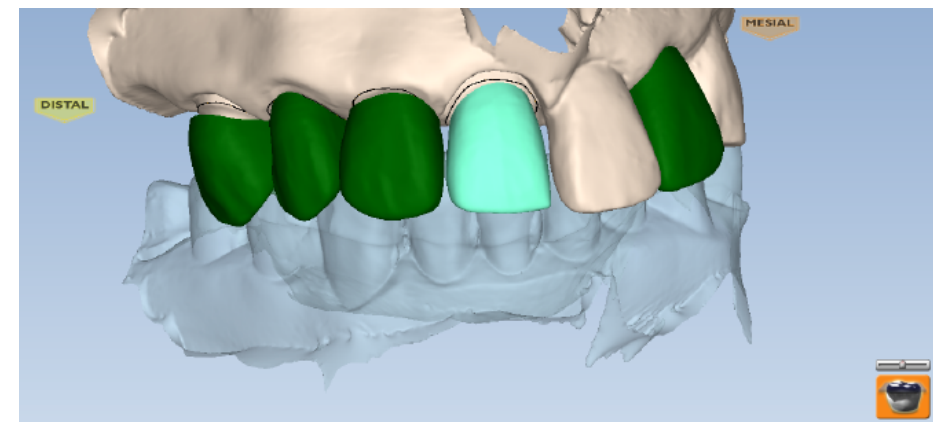
This step does not replace the Orientation function in the Margin screen. If a preview tooth is drastically out of alignment, return to the margin screen and adjust the orientation.

1. Click a tooth tab to select it.
2. Click the desired action button: **Rotate**, **Resize**, or **Move**. Place the cursor over the proposal, then right click and drag to perform the desired action.



Keyboard shortcuts are available for the resize action. Hold down the shortcut key while using the mouse: **Shift** for mesial/distal, **Ctrl** for lingual/buccal, and **Alt** for occlusal/gingival. Use these shortcuts carefully to avoid distorting the anatomy.

3. Click the **View Bite Registration** icon to view the opposing information if desired.
4. Adjust the preview tooth as needed for all proposals.



Autogenesis uses the adjusted preview tooth's size and position as the new starting point for the proposal design.

5. Proceed to the Design tab.

Windows 10

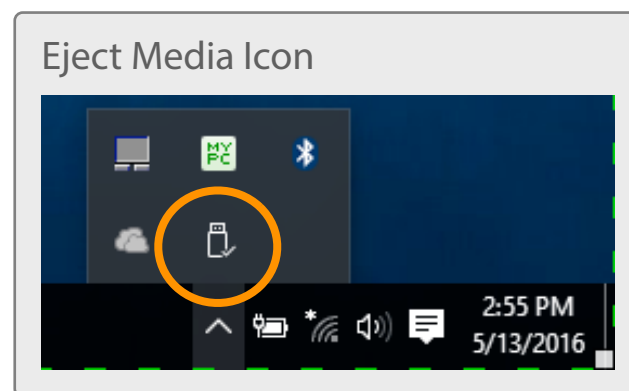
CHANGES

1. New Eject Icon
2. Display Percentage
3. Shut Down / Restart

Upgrading to Windows 10 is optional, but here are a few things you should be aware of.

New Eject Icon

When disconnecting the Thunderbolt adapter, the new Eject Media icon has changed. It may not display by default near the clock on the task bar. Click the up arrow to see more icons. Proceed normally.

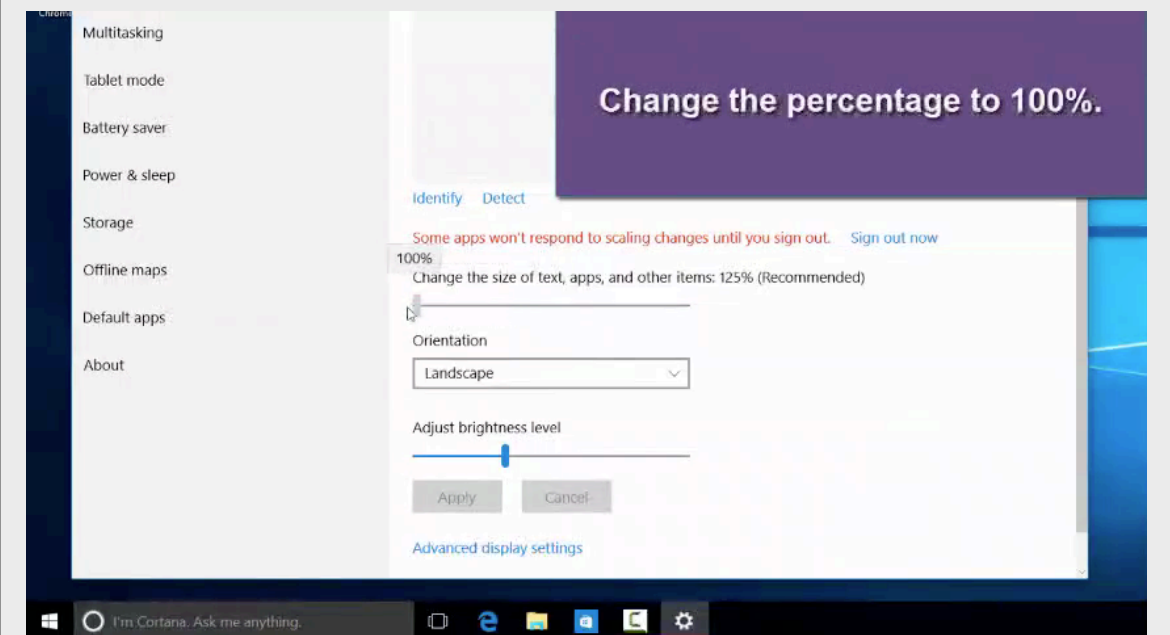


Display Percentage

The new default for Windows 10 is to increase the display to 125%. This must be changed in order for our software screens to display properly.

1. In the Cortana search field, type **Display**.
2. Click **Display Settings**.
3. The new default is 125%. Change the percentage it to **100%**.
4. Click the **X** at the top to exit.

MOVIE 3 Changing the Display Percentage



Shut Down/Restart

The pop-up Charms menu has been removed. Use the Windows icon in the bottom left to access the Power options to shut down or restart the laptop.

Material Manufacturers

3M ESPE - www.3mespe.com

GC - www.gcamerica.com

Ivoclar Vivadent - www.ivoclarvivadent.com

Vita - www.vita-zahnfabrik.com

Zirlux - www.zirlux.com

Related Glossary Terms

Drag related terms here

Index

Find Term